

# Katri

3 Bedrooms | 2 Bathrooms | 2 Garage

Living: 1360 sq. ft.

Garage: 484 sq. ft.

Covered Entry: 36 sq. ft.

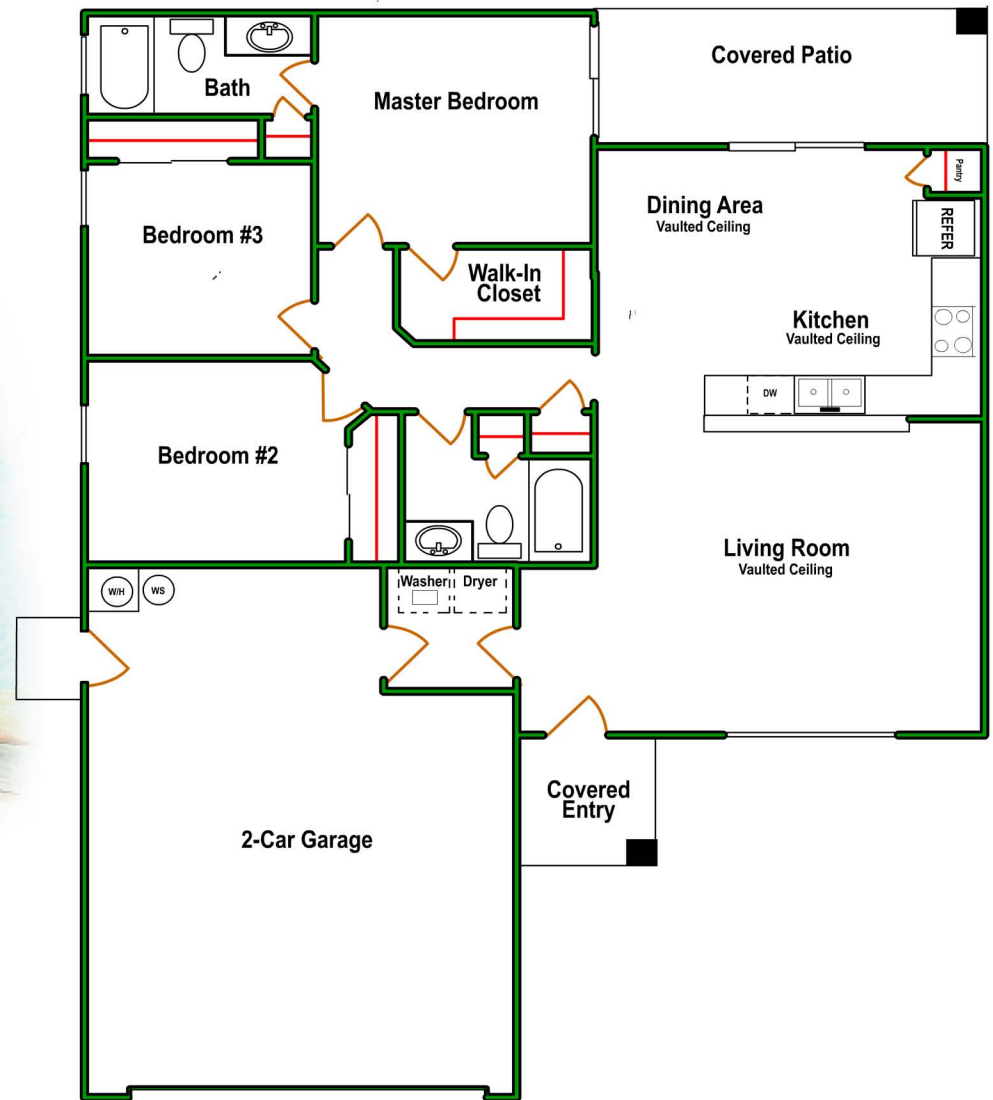
Covered Patio: 158 sq. ft.

Total: 2,038 sq. ft.



[www.thehousethatglenbuilt.com](http://www.thehousethatglenbuilt.com)

  
**MOUNTAIN VIEW HOMES**  
*at SUN VALLEY*  
 HOA-free, new home living



1440 Corona Rd, Fort Mohave, AZ ~ 800-660-6406 ~ 928 768-7253

ROC Lic. #144998. Elevations shown are an artist's concept only and are not an exact representation of actual homes, exterior colors or landscape surrounding each home. Mountain View Homes reserves the right to modify elevations, colors and floorplans without notice. Consult your MVH sales agent for current information and pricing.

