

Sundowner

3 Bedrooms | 2 Bathrooms | 3-Car Garage

Living: 2,212 sq. ft.

Garage: 899 sq. ft.

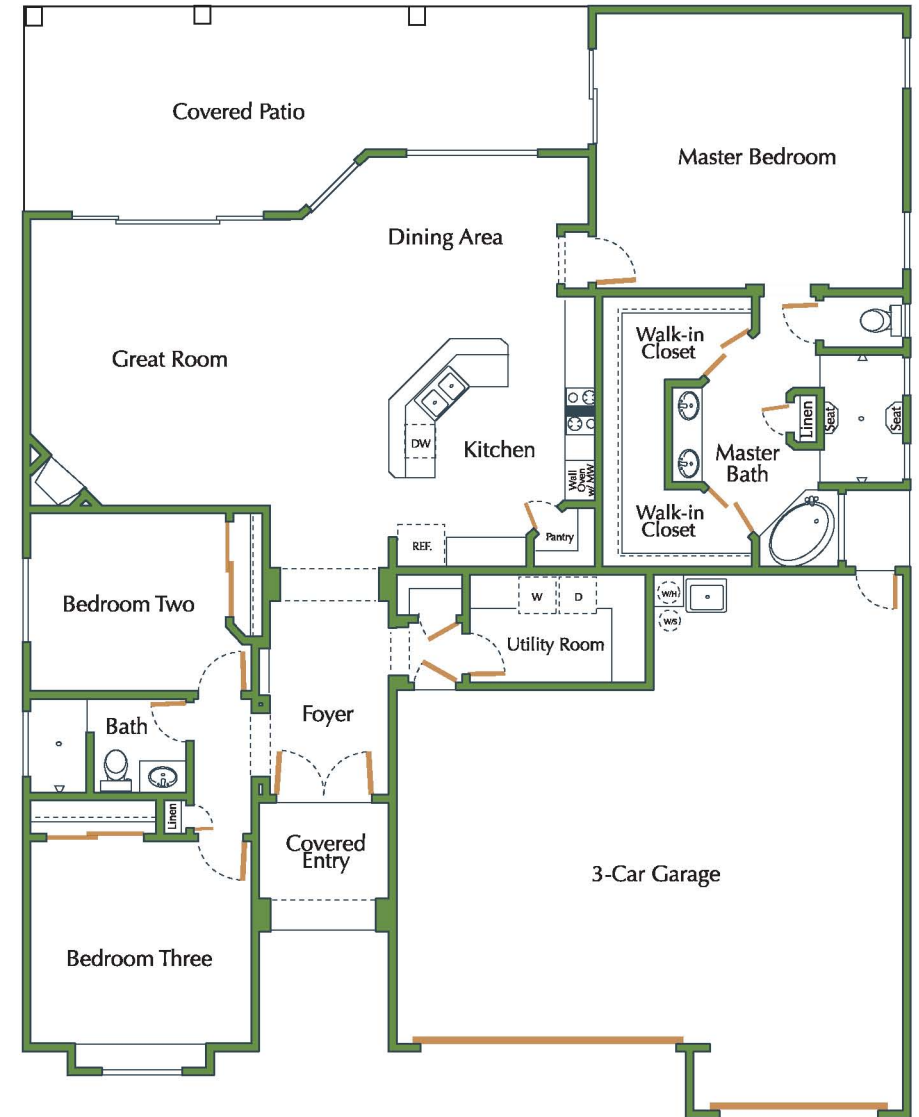
Covered Entry: 64 sq. ft.

Covered Patio: 391 sq. ft.

Total: 3,566 sq. ft.



www.thehousethatglenbuilt.com




MOUNTAIN VIEW HOMES
at SUN VALLEY
 HOA-free, new home living

1440 Corona Rd, Fort Mohave, AZ ~ 800-660-6406 ~ 928-768-7253

ROC Lic. #144998. Elevations shown are an artist's concept only and are not an exact representation of actual homes, exterior colors or landscape surrounding each home. Mountain View Homes reserves the right to modify elevations, colors and floorplans without notice. Consult your MVH sales agent for current information and pricing.

